

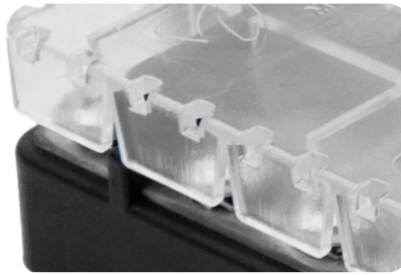
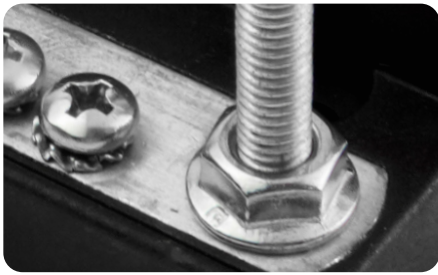
**Dual Level Busbars** include transparent cover, allowing inspection of torque markings without removal, and provides break-away tabs for cable / terminal access while ensuring maximum protection against inadvertent shorts to adjacent parts.

**Dual Level Busbars** allow wires and cable to approach from the same direction, and include an offset link busbar to tie busbars together

**Compact 100 A Busbars** offer optional transparent covers

**Stainless Steel Self Locking Hardware** Ensures long term reliability and ease of installation

**Tin Plated Copper Busbars** deliver superior electrical performance with minimal voltage drop



*Related Products: 150 Amp Busbars*



P/N: 6150-400B

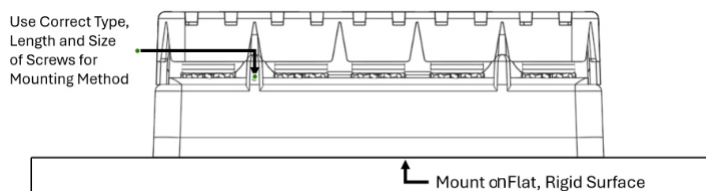


P/N: 6150-220B

## Installation Guidelines

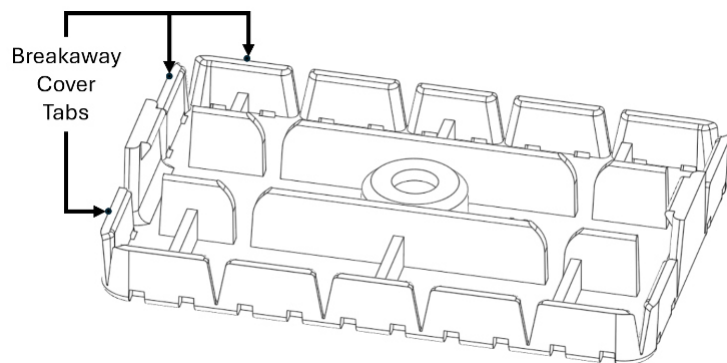
- \* **DISCONNECT BATTERY FROM POWER DISTRIBUTION SYSTEM BEFORE INSTALLING PRODUCT TO PREVENT ELECTRICAL SHOCK OR FUSE DAMAGE**
- \* **INSTALLER / MANUFACTURE IS RESPONSIBLE AND FULLY LIABLE FOR ENSURING THIS PRODUCT IS INSTALLED IN A MANNER THAT WILL NOT EXCEED THE PRODUCT'S SPECIFICATION**
- \* **FOLLOW AMERICAN BOAT AND YACHT COUNCIL (ABYC) OR OTHER RELEVANT GUIDELINES FOR SELECTING AND INSTALLING THIS PRODUCT TO MEET YOUR APPLICATION**

(1) Mount product on a flat surface with sufficient rigidity to support the product and all attachment cables.



(2) Use the appropriate screw type (machine/thread cutting), size (match with pilot or through-hole diameter), and length; ensuring that the weight of the product and associate cables will be properly secured.

(3) Assemble input and output cables to external studs to meet application requirements. Check cover fit and if cable/terminal diameter interferes with full seating of cover, remove breakaway tabs as needed with pliers. Torque cable terminal nuts to target specification level.



(5) Assemble cover to base by pressing rubber grommets over corresponding stud terminals.

(6) Strain relief cables to a fixed mounting surface and/or other cables to stop cable weight and system shock/vibration from loosening attachment nuts. Follow minimum strain relief distances per applicable industry standards.

(7) Perform system-level validation in worst-case conditions ensuring maximum cable/terminal temperatures are not exceeded

## Related Products - 250 Amp Busbars



P/N: 6251-208B

## Specifications

Maximum Voltage (Vdc)	80 Vdc
M6 Nut Recommended Torque	80 in-lbs (9.0 N-m)
M6 Nut Maximum Torque	100 in-lbs (11.3 N-m)
Mounting Screw Max Torque	50 in-lbs (5.5 N-m)
Cover Material	Clear Polycarbonate
Base Material	Nylon 6 30% GF
Operating Ambient Temperature Range	-40 C to 125 C
Max Storage/Shipping Temperatures	-50 C to 140 C
Busbar Material	Tin Plated Copper
Mounting Holes	4x #10(M5) & 2x 1/4"(M6)

## Related Products - 100 Amp Busbars

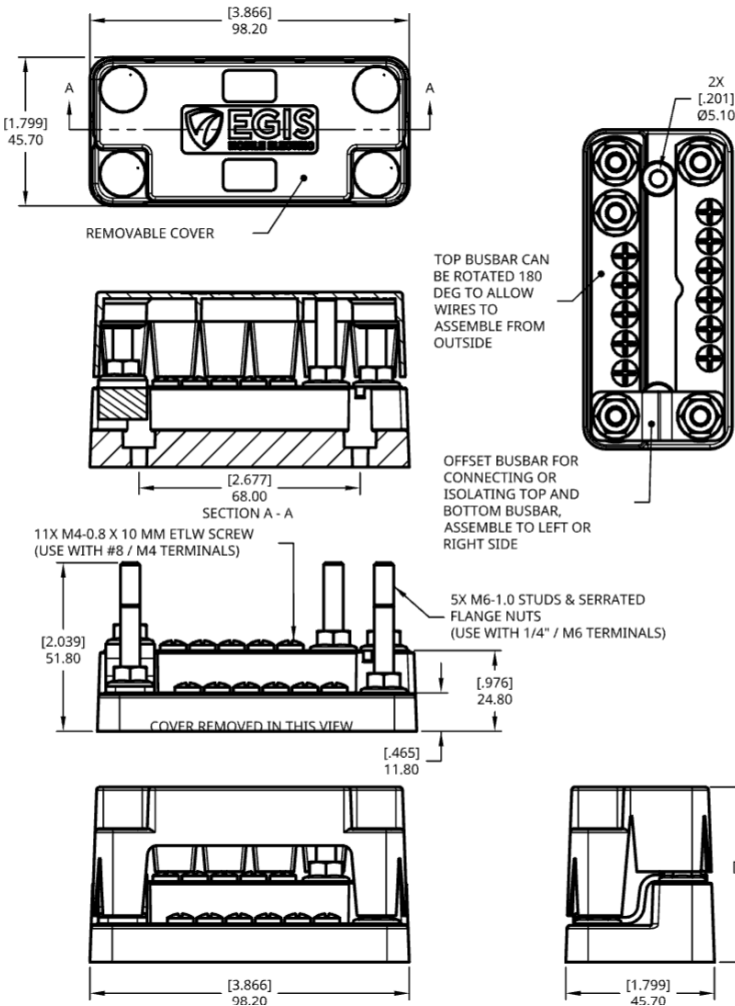


P/N: 6101-205B

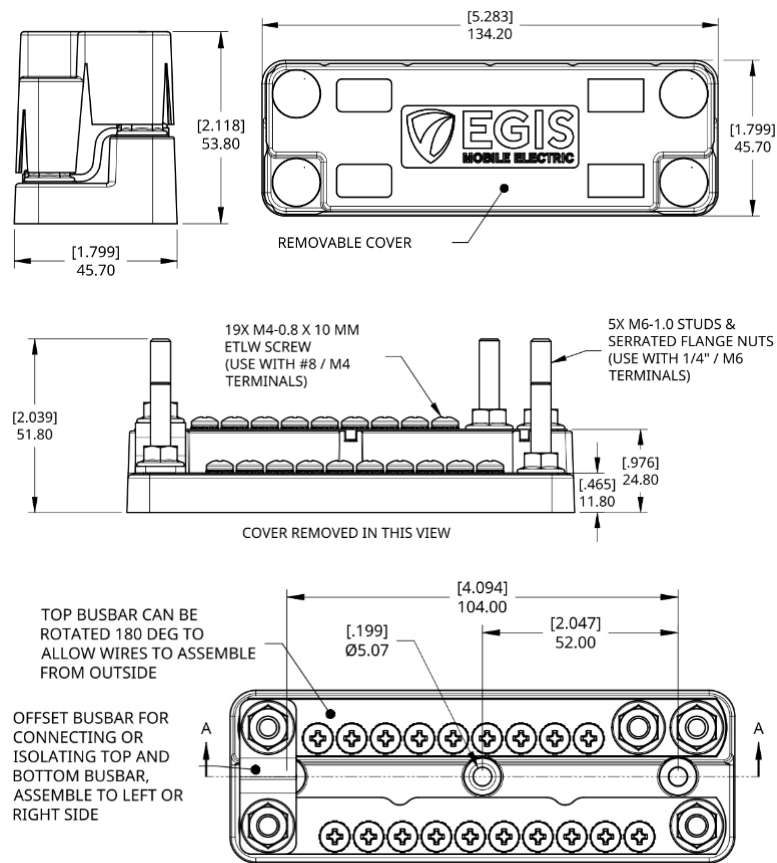
Part Numbers	Resell Pack	Bulk Pack
100 A Dual Busbar - 2x 5 Screw	6100-005	6100-005B
100 A Dual Busbar + Cvr 2x 5 Screw	6101-005	6101-005B
100 A Dual Busbar - 2x 10 Screw	6100-010	6100-010B
100 A Dual Busbar + Cvr 2x 10 Screw	6101-010	6101-010B
Cover for 100 A Dual Busbars (Qty 1 per 6100-005, Qty 2 per 6100-010)	6103	6103B
200 A Dual Level Bus + Cvr - 11 Screw	6200-225	6200-225B
200 A Dual Level Bus + Cvr - 19 Screw	6200-229	6200-229B

Related Part Numbers	Resell Pack	Bulk Pack
100 A Busbar - 2 Stud - 5 Screw	6101-205	6101-205B
100 A Busbar - 4 Stud	6101-400	6101-400B
150 A Busbar - 2 Stud - 10 Screw	6151-210	6151-210B
150 A Busbar - 2 Stud - 20 Screw	6151-220	6151-220B
150 A Busbar - 4 Stud	6151-400	6151-400B
100 A Busbar - 4 Stud	6101-400	6101-400B
250 A Busbar - 2 Stud - 8 Screw	6251-208	6251-208B
250 A Busbar - 2 Stud - 14 Screw	6251-214	6251-214B

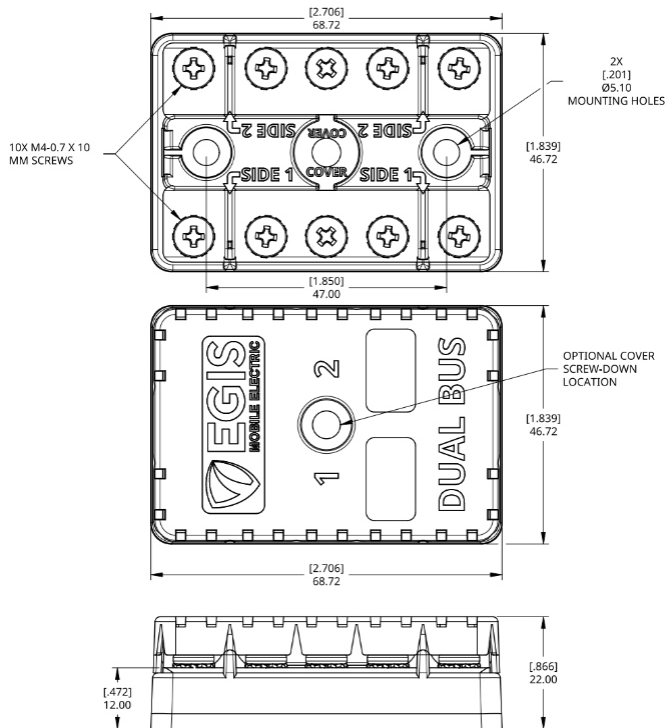
## Dimensions - 6200-225



## Dimensions - 6200-229



## Dimensions - 6101-005



## Dimensions - 6101-010

